



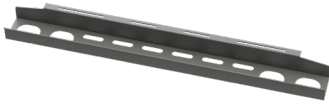
Height Adjustable Table ACC

Height Adjustable Table Accessories

CBLT

Cable Trough

- Compatible with most height adjustable tables and standard desks
- Holes to manage and separate cables
- Quick and easy installation - Using existing hardware
- 42" long x 4" wide



\$97

*Hardware not included (Uses table base hardware)

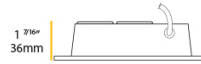
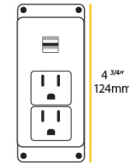
PS2-2U-S

Surface Mount 2 Outlet Power Strip with 2USB

- UL/CSA approved

\$43

Specifications					
125V	AC	60GHz	12A	2	2



10ft power supply cable



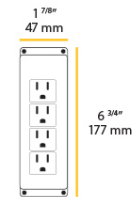
PS4-S

Surface Mount 4 Outlet Strip

- UL/CSA approved

\$53

Specifications				
125V	AC	60GHz	12A	4



10ft power supply cable



PB4-2U-F

Pullout/Foldable Power Bar

- Can fold either side
- Fits 2 3/8" grommet hole
- UL/CSA approved
- Stores when not in use

\$139

Specifications					
125V	AC	60GHz	12A	4	2

8ft power supply cable



PB6-2U-SP

6 Outlet Strip with USB

- Pivoting outlets
- Charging USB indicator light
- Ground and protection indicators
- UL/CSA approved

\$90

Specifications					
125V	AC	60GHz	12A	6	2

10ft power supply cable



Height Adjustable Table Accessories




PPS3-2U-1P-F



Pivoting USB Power Station

- Flush mount requires 4 3/16" grommet hole
- UL/CSA approved
- USB power adaptor included

\$149

Specifications						
125V	AC	60GHz	12A	3	2	1

PH3-2U-F





Power Harness with USB Ports

- 2 x 5ft USB wire
- 8ft cable with plug
- White 2 port USB adaptor included
- UL/CSA approved

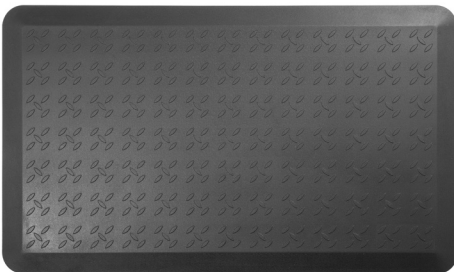
\$259



Specifications					
125V	AC	60GHz	12A	3	2

AFM-L Specifications

Anti-Fatigue Standing Mat



- 100% non-toxic PU material
- Strong tear-resistant material
- Easy to clean, and resistant to common fluids and chemicals
- Reduces pressure on the heels, back, legs, and shoulders
- Contoured beveled design
- Dimensions are 21.6" x 36.5" x 0.63"

\$119